

Brierley Hill Area Action Plan

Green Infrastructure: A Sustainable Future



Strategy and policies developed after extensive consultation (taking on board comments from agencies including Sport England, English Heritage, Inland Waterways Association, British Waterways & Natural England)

Draft plan prepared

Special Cabinet 18th November 2009
for approval to publish

Public Consultation
30th November 2009 – 15th January 2010

Submit to Secretary of State
End February 2010

Examination in Public
November 2010

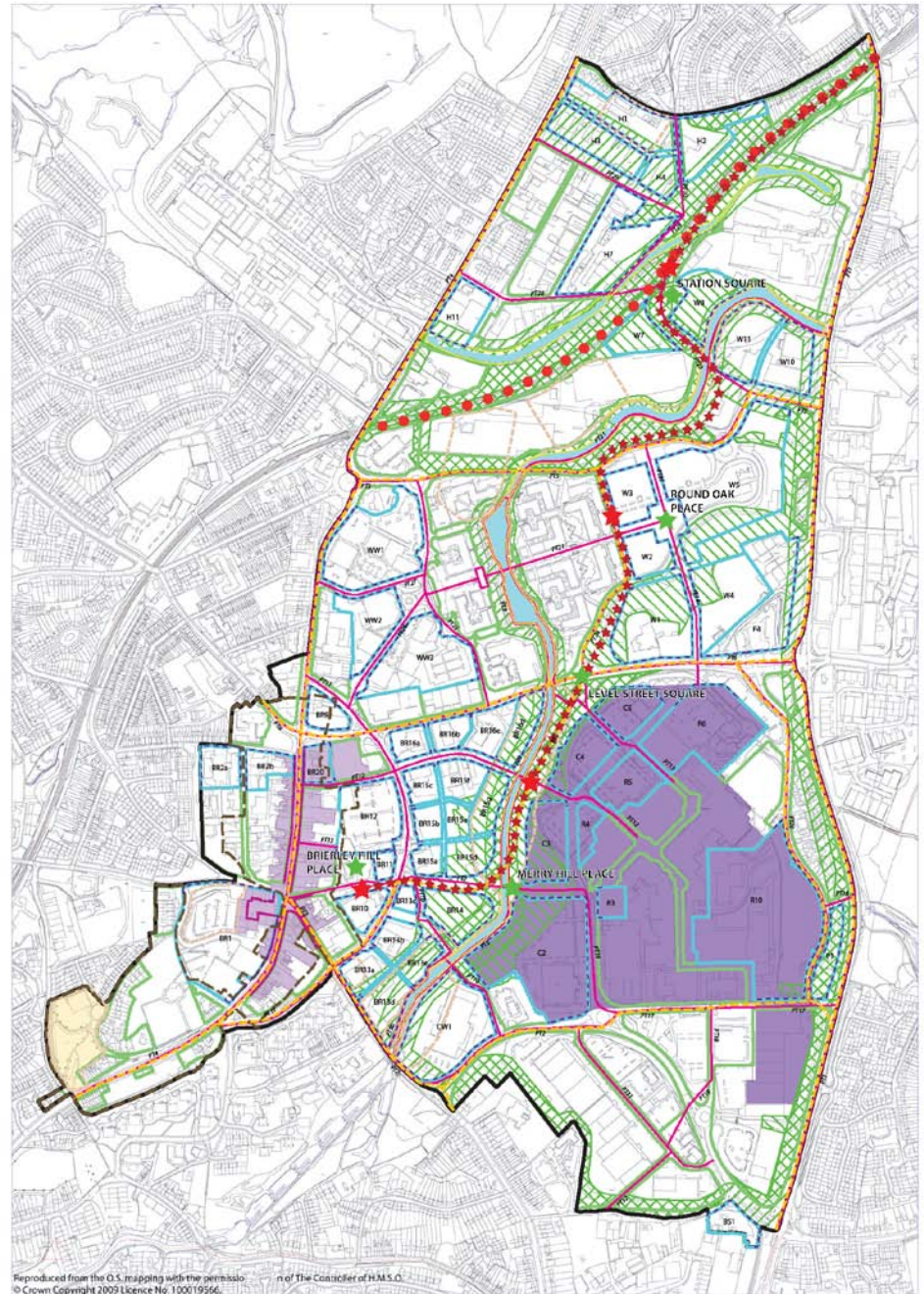
Adoption July 2011

Progress on the Area Action Plan



The Area Action Plan

- A strategic plan to guide £1.5bn of investment to 2026
- Will be used for making decisions on planning applications and guiding investment
- Accommodates over 3000 new homes, 220,000m² offices, 65,000m² comparison retail, leisure and community facilities in a connected network of public thoroughfares, the canal and wildlife corridors
- Key theme is 'green infrastructure'. The strategy aims to preserve important areas, seek mitigation for any damage and deliver enhancements to create an overall positive balance.

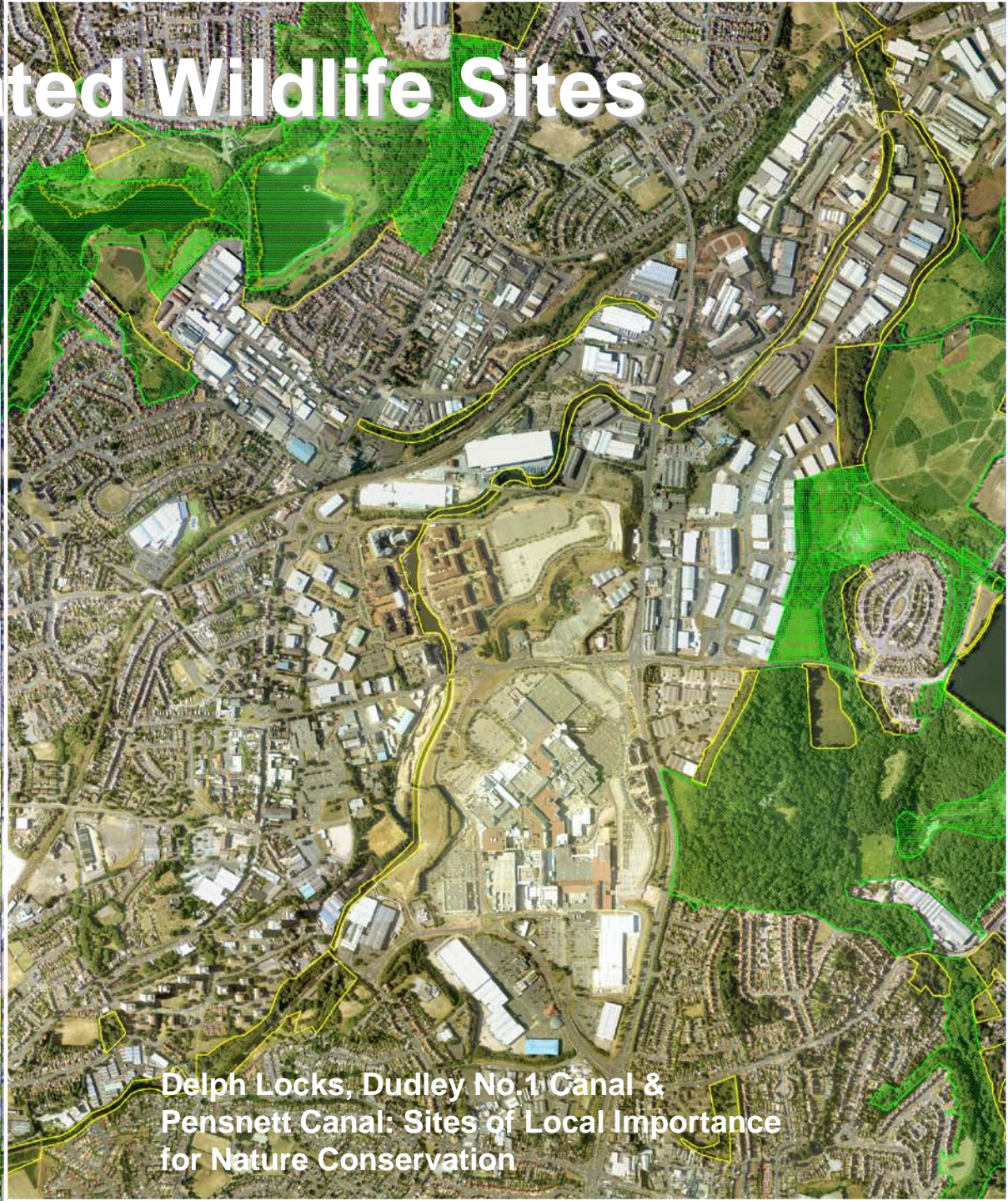


Designated Wildlife Sites

Fens Pool: Special Area of Conservation, Local Nature Reserve, Site of Importance for Nature Conservation and Site of Local Importance for Nature Conservation



Saltwells: Local Nature Reserve, Site of Importance for Nature Conservation and Site of Local Importance for Nature Conservation



Delph Locks, Dudley No. 1 Canal & Pensnett Canal: Sites of Local Importance for Nature Conservation

Priority Species & Habitats

The area is home to many species, of these the key species (and the habitat they depend on) could be seen as:

- Bats (open water, woodland, scrub, rough grasslands, trees and structures)
- Black redstart (brownfield sites, canals and railways)
- Dingy skipper (brownfield sites, species rich grassland)
- Great crested newt (ponds, rough grassland, scrub/woodland)
- Green hairstreak (brownfield sites, species rich grassland)
- Kingfisher (open water and banksides)
- Otter (open water and banksides)
- Water vole (open water and banksides)

Priority habitats present, or bordering the area:

- Ancient and semi-natural woodland
- Open mosaic habitats on previously developed land
- Open water
- Semi-natural grassland



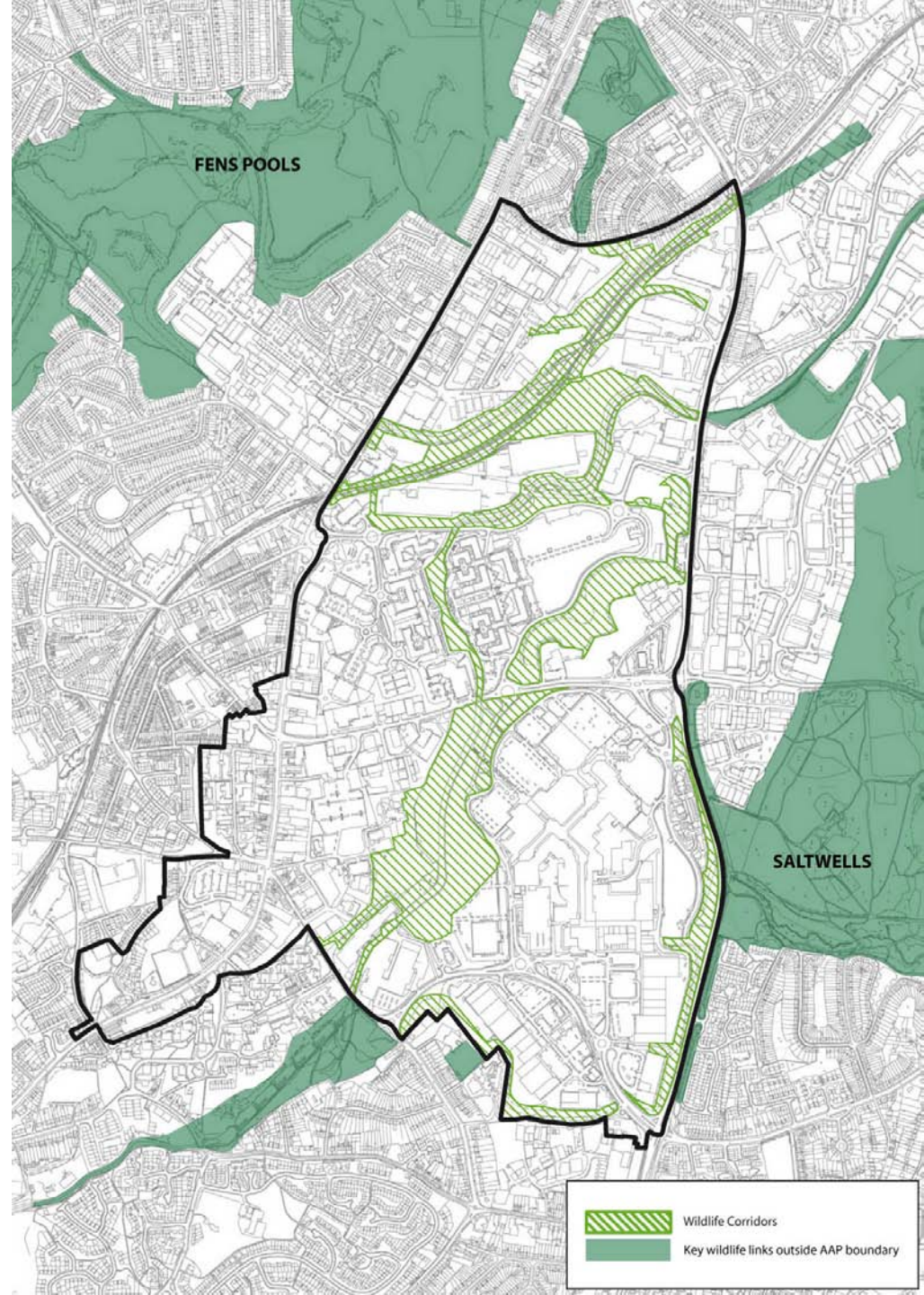
Tier 1:

The Wildlife Corridors

Existing corridors linking Fens Pool to Saltwells by linear habitats and stepping stone sites

Seek to maintain and where possible enhance the corridor

Development in these areas will be required to protect areas of high ecological value and provide mitigation for any unavoidable damage



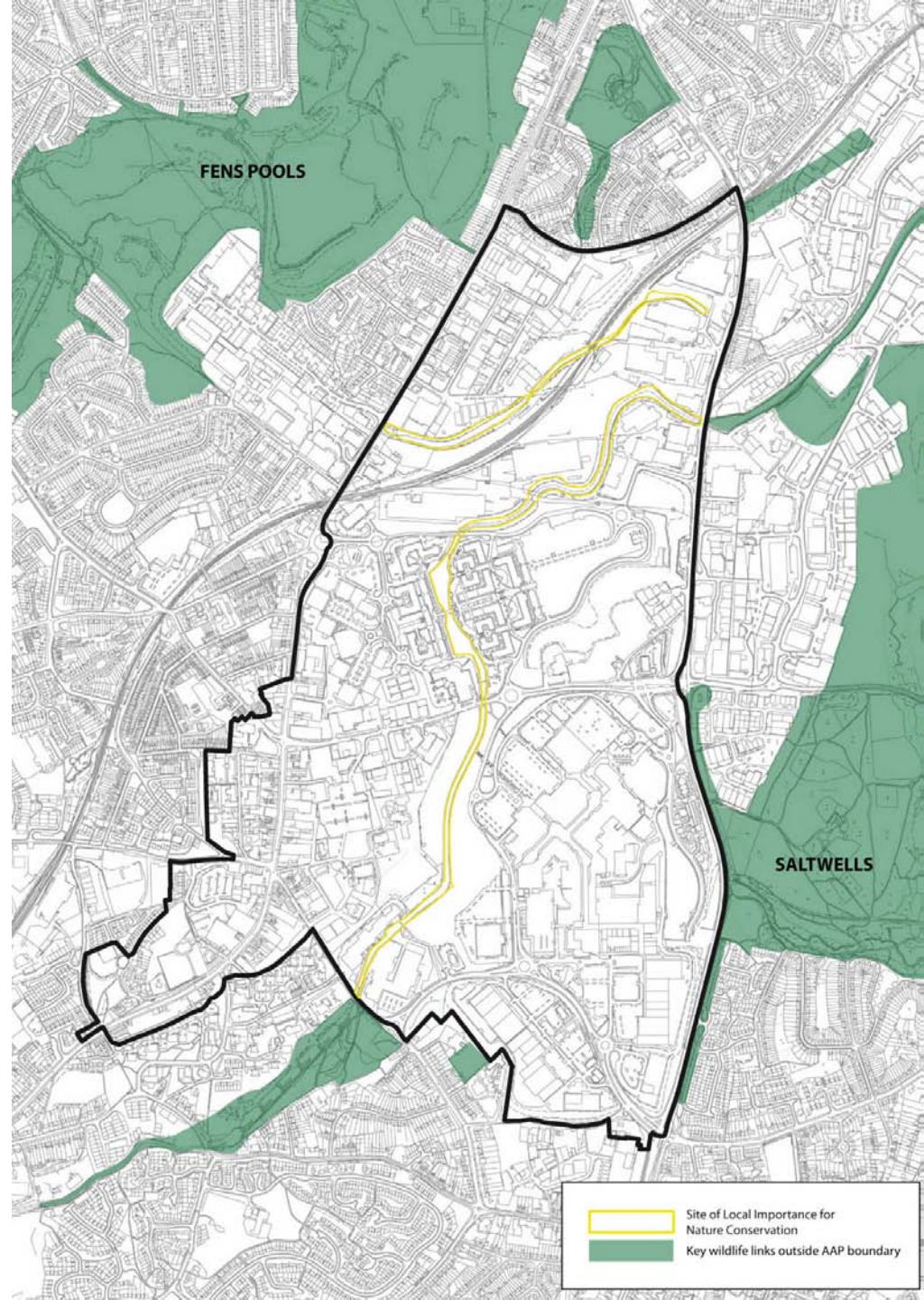
Tier 2:

The Sites of Local Importance for Nature Conservation

Part of a wider Black Country network of SLINCS

Seek to maintain and where possible enhance the quality, amount and distribution of the key habitat types and features within this sub-regional network

Development in these areas will be required to protect areas of high ecological value and provide mitigation for any unavoidable damage



Tier 3:

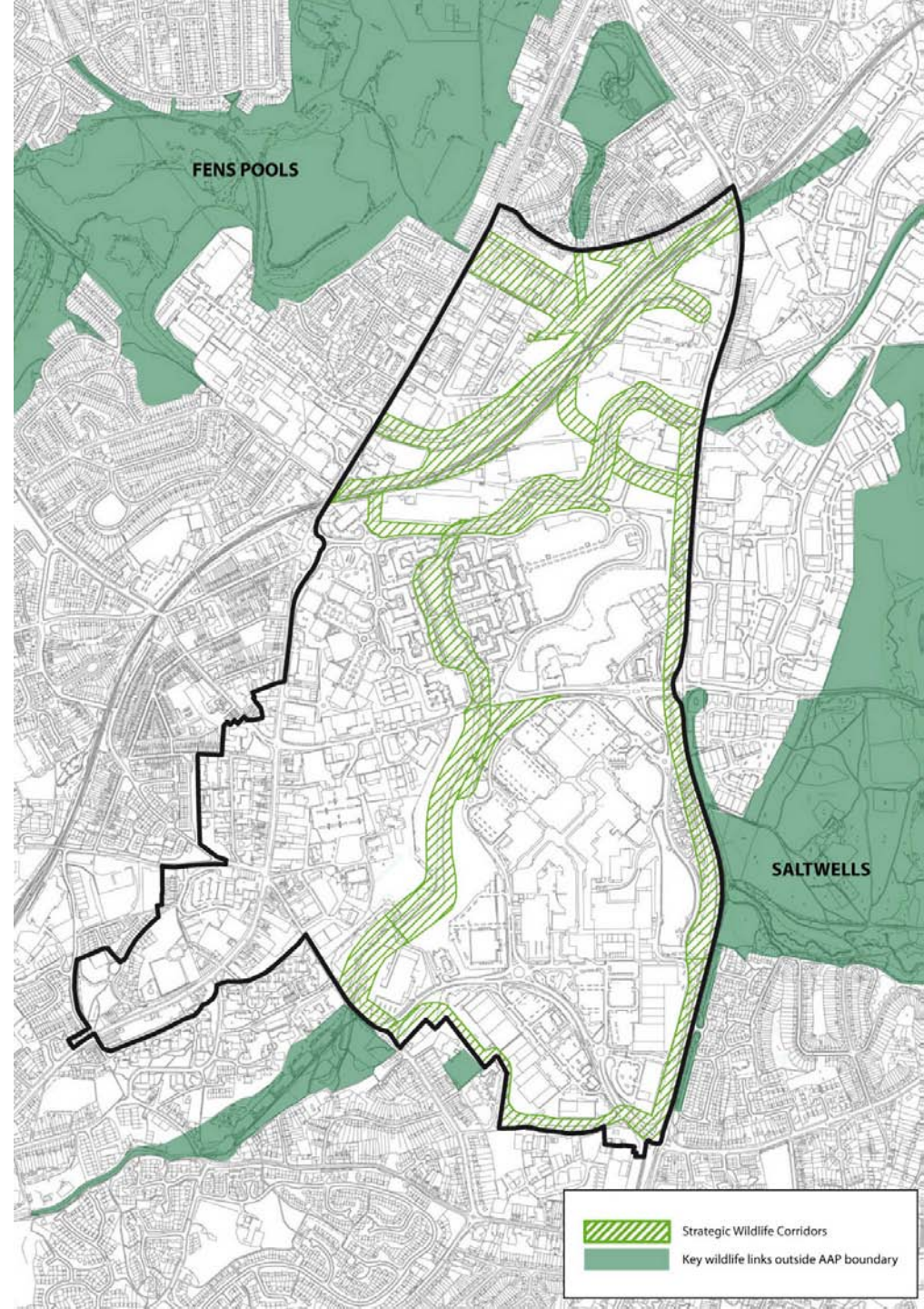
The Strategic Wildlife Corridors

Demonstrate the most efficient and effective routes to link Fens Pool and Saltwells.

Development will be required to positively contribute to this network.

Need to function for many different species and will need to be at least 12-15m wide with larger areas to provide resting places and breeding habitat

Creation of enhancements to create an overall positive balance



The Local Environment

- Landscaping and street trees
- Water management including sustainable urban drainage systems
- Green roofs and walls

